

EN010127- Application by Mallard Pass Solar Farm Limited for an Order Granting Development Consent for Mallard Pass Solar Project

ISH 1, Scope of the Proposed Development, Need, Site Selection and Alternatives

Submission by John Hughes ref ID. 20036141

Written Response to oral submission.

Agenda Item

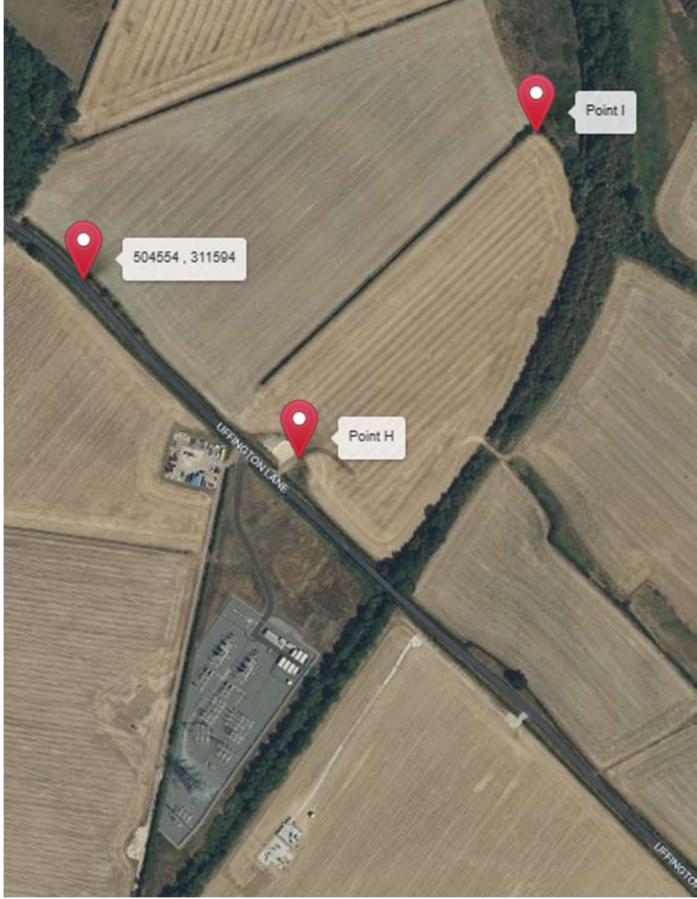
3. Scope of the Proposed Development f) Proposed on-site substation

At Sage 1 and Stage 2 consultation the data presented to the community contained no dimensional details to the size and height of the substation with 'proposed site' being presented as the area for battery storage containers approximately 3 meters high.

No one has been able to comment on the size, appearance and visual effect of what will be largest and most visual structures in the project and how they will fit into the landscape, with photomontage APP 168 and APP 172 using winter seasonal colours to hide in the representation what the site would be like.

The applicant stated the sub-station was fundamental to the operation of the proposed site and it's function could not be changed to which I agree, if this is the case why at Stage 1 and Stage 2 consultation with the public was the detail not presented in the same manner as that of the PV arrays and why were only drawing containing height details to battery storage units presented to the public.

The visual impact of the substation does not have to represent that of other substation presented and could but excavated down into the land so the tallest structures are no higher than current ground level at the lowest point of the proposed site location so mitigating the visual impact on the horizon. Field 19 has approximately a 10m elevation change between the top of the field point (H) (were the current hard core is) and the bottom of the field closest the railway point (I)



Metric Imperial

Point Description	Distance (km)	Height (m)
505259 , 313504	0.000	34
505069 , 312909	0.624	24
504944 , 313554	1.281	25
506146 , 313119	2.556	38
506316 , 309033	6.643	32
504554 , 311594	9.748	43
504377 , 312284	10.459	43
Point H	11.395	35
Point I	11.777	25

Note: having attended the meeting today a representative of MPSF with an A3 print containing the data has given me the document reference. It has only been made available after being requested by yourselves the Examining Body. REP2-038 Appendix A Q1.0.4, The control Room and Welfare building will be 6 meters tall which is twice the height of the proposed battery storage containers

The Applicant has, or will have, the ability to procure the necessary land and rights in order to provide the proposed Onsite Substation to facilitate the Grid Connection, does the result of this mean the substation will not be decommissioned and the land in field 19 would not be put back to agricultural use and in future could be used for justification of granting future developments to the West of the East Coast Mainline?